



# Jungle Living Plants

**LinxWay**

*"Trade Made Simple"*



## Hedera Green Pittsburgy

- **Highly versatile.**
- **Evergreen Vine.**
- **Small to medium deep green and glossy leaves.**
- **Ground cover.**
- **Habit:climbing**



## Hedera Green shamrock

- **Color:**
- **Leaf color: Growth**

**Habit:climbing**



## Hedera Golden child

- **Color:**
- **Leaf color:Green**
- **Growth Habit: climbing**



## Hedera var. Eva

- **Color:**
- **Leaf color:Green**
- **Growth Habit:climbing**



## Crassula Ovata Sunset

- **Ovata Sunset**
- **glossy, rounded, fleshy green leaves**
- **adorned with golden yellow tips and red edges**
- **small starry white or pink flowerbloom in profusion from fall to spring**



## Crassula Ovata Horn tree

- **tube like leaves that look like horns**
- **Prefers bright light**



## Crassula Ovata

- **Oblong, fleshy, shiny, evergreen leaves**
- **Leaves may acquire red tints when grown in direct sun**



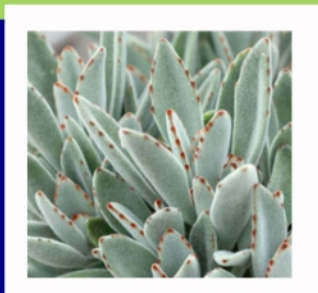
## Crassula Minor

- **Evergreen succulent with shiny leaves**
- **Blooms during winter**



## Kalanchoe Thyrsiflora

- very drought tolerant plant, but wrinkly, shriveled leaves are a sign that it's gone too long without a drink



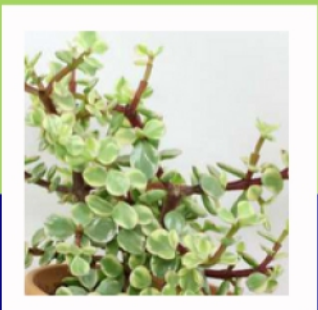
## Kalanchoe Tomentosa

- also known as pussy ears or panda plant, is a succulent plant



## Portulacaria Afra

- Small, fleshy leaves are triangular with rounded edges



## Portulacaria Afra Variegata

- Thick, fleshy leaves are tear-
- drop-shaped to oval with smooth leaf edges
- light green with cream-coloured leaf margins that varies in proportion among different leaves.



## Peperomia Obtusifolia var

- **Highly variegated leaves with splashes of cream and sage green**



## Peperomia Orba Pixie Lime

- **Semi-succulent, so it grows best in light, well-draining soil and prefers full sun- light and warm temperatures**



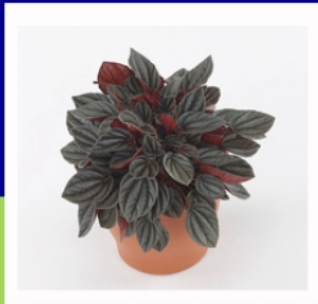
## Peperomia Obtusifolia Green

- **is a bushy, upright plant with thick stems and fleshy, glossy, cupped leaves**



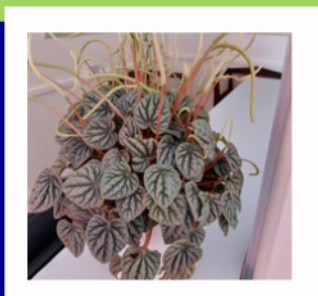
## Peperomia Clusiifolia var Ginny

- **is a new variation of Peperomia in the**
- **Piperaceae family**



## Peperomia Sunrise

- Light green to silvery leaves with soft pink to red veins
- Leaf undersides are less dramatically red than 'Rosso'
- Smoother leaf texture, with less pronounced ridges



## Peperomia Caperata

- rosettes of long stemmed, wrinkled, deeply corrugated, heart-shaped, dark green leaves (to 1 1/2" long) on long red-tinged stalks
- Leaves are deeply veined with an attractive corrugated surface. Leaf color is close to black along the corrugations



## Peperomia Obtusifolia Marble

- Features thick, spoon-shaped leaves marbled with creamy white, soft yellow, and green
- Compact, bushy growth habit—ideal for small spaces and tabletops
- Tolerates low to bright indirect light; easy-care houseplant



## Philodendron Oxycardium Green

- known for its air-purifying properties. It efficiently removes common indoor pollutants like formaldehyde, xylene, and toluene



## Senecio

### Cardicans Angel Wings

- Silvery-white leaves that will light up a border or container



## Senecio

### Sea Pearls

- greenery floats down over the edge of the pot and looks very classy and stylish.
- The plant will purify the air, cleaning up the atmosphere around wherever it is situated.



## Senecio

### Serpens Blue Chalksticks

- Powdery blue-green fleshy leaves provide year round interest, taking on purple tints in extreme heat and sun exposure



## Maranta

### Kerchoveana

- Soft green oval leaves with darker blotches resembling rabbit tracks
- Undersides are pale green, adding visual contrast
- Foliage folds up at night like praying hands



## Philodendron Oxycardium Brazil

- **blotched yellow and green, heart-shaped leaves, each with a pointed tip**
- **stems are pink when young**



## Philodendron Xanadu Golden

- **shiny golden leathery leaf has 15–20 distinct lobes**
- **leaves of this beautiful, exotic looking foliage plant**



## FICUS Green

- **Glossy, rich green foliage with a lush, tropical appearance**
- **Upright growth habit, ideal for indoor or patio use**
- **Tolerates moderate light and occasional drought**



## FICUS Variegatta

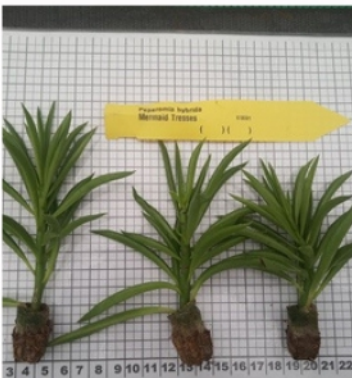
- **Attractive green and creamy-white variegated leaves add a bright accent**
- **Elegant, upright habit suitable for both indoor and outdoor settings**
- **Thrives in bright, indirect light; tolerates some sun**



**This image showcases cuttings in a bag properly packaged.**



**This showcases the unrooted cuttings that are to be shipped and how they are packaged in shipping boxes.**



**The image showcase the various plugs for rooted plants and their sizes**